

## Replacement of the membrane of the heart model

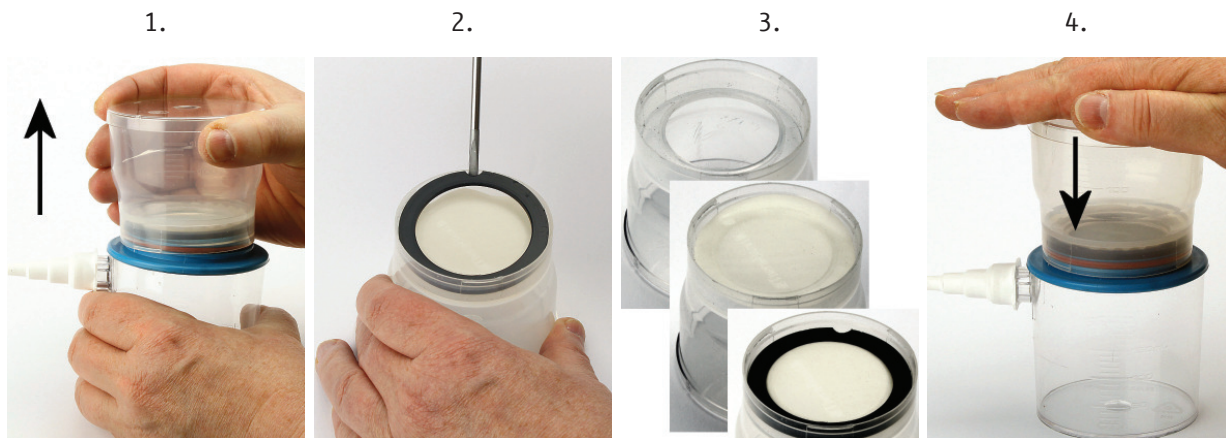
### Components of the heart model



- 1 lower container with tubing adapter
- 2 upper container with lid
- 3 rubber pressure ball with tubing
- 4 membrane
- 5 locking ring

### Replacing the membrane

1. Empty the heart model. Disconnect the upper container upwards from the lower container.  
**NO SCREW CONNECTION!**
2. Place the upper container upside down. Carefully lever the locking ring from his fit. Remove old or broken membrane.
3. Insert the new membrane in center. Place the locking ring with its bevel on the ring inner side downward (toward the membrane) and press it on.
4. Put the upper container to the lower container and press it firmly together.  
**NO SCREW CONNECTION!**



#### **NO SCREW CONNECTION!**

The heart model is designed as a plug-in system. The membrane will be damaged by twisting the upper to the lower container.