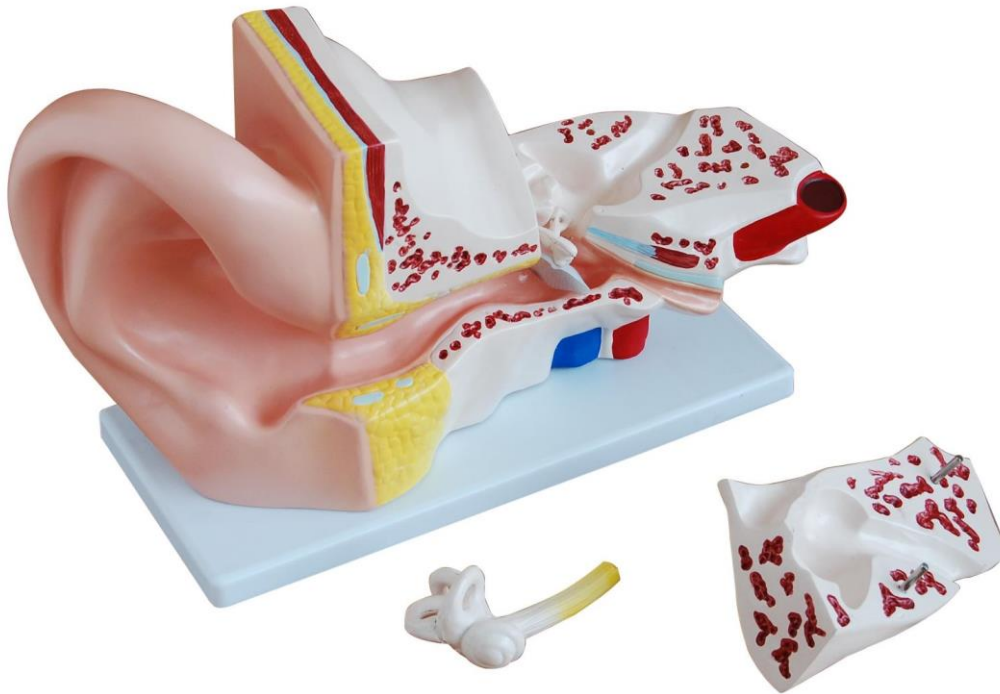


PHYWE Ear model, 5 times enlarged, 4 parts
MOD-EAR



USES:

The model is designed as a visual aid for teaching physiology and hygiene courses. It helps the students to understand the three main structural parts of the hearing organ (external ear, middle ear, internal ear) and the position of the equilibrium organ of human body.

DEMONSTRATIONS:

1. External ear

Showing the shape of the auricle and the primary features of the external auditory meatus.

2. Middle ear

Showing the tympanic membrane, the three auditory ossicles (hammer, anvil, stirrup) and the Eustachian tube.

3. Internal ear

Showing the vestibule, cochlea and the three semicircular canals of the osseous labyrinth.

DIMENSIONS: 43 cm x 25 cm x 15 cm

CONSTRUCTION: Made of PVC plastic. On base.