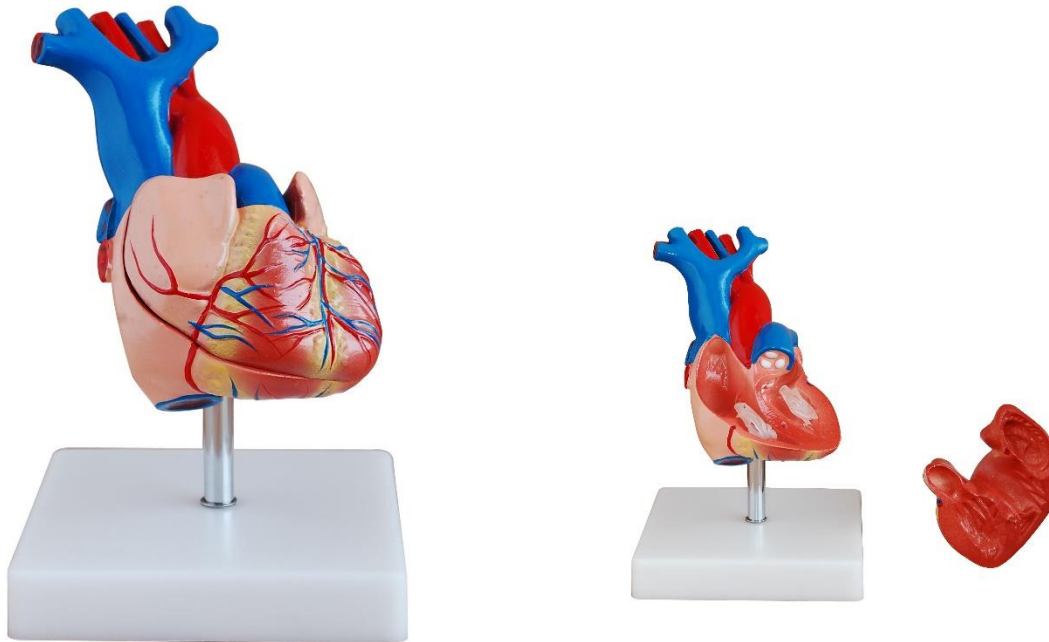


Human heart, 2 parts MOD-HEART



Internal structure, after dissection into parts

USES:

The model is designed as a visual aid for teaching physiology and hygiene courses. It helps students understand the morphology and anatomical structure of the heart.

DEMONSTRATIONS:

The model shows the anatomy of human heart with ventricles, atriums, valves, veins, and the aorta in great anatomical detail. The front heart wall is removable to view the chambers and internal structures.

The sterno-costal, diaphragmatic and posterior surfaces of the heart with its transverse furrow, coronary sulcus between the atria and ventricles and the anterior posterior longitudinal grooves, interventricular sulci, separating it into right and left halves are morphologically manifested thereon.

The blood supply of the heart is conveyed by right and left coronary arteries, coronary sinus, great, middle and small cardiac veins, etc.

The internal structures of the heart are dissectible into 2 parts, for showing the four cavities: right atrium, right ventricle, left atrium and left ventricle. It also shows the tricuspidal valve and mitral valve in the heart.

CONSTRUCTION: Made of PVC plastic. On base.

SIZE: Life-size, 15 x 8 x 9 cm