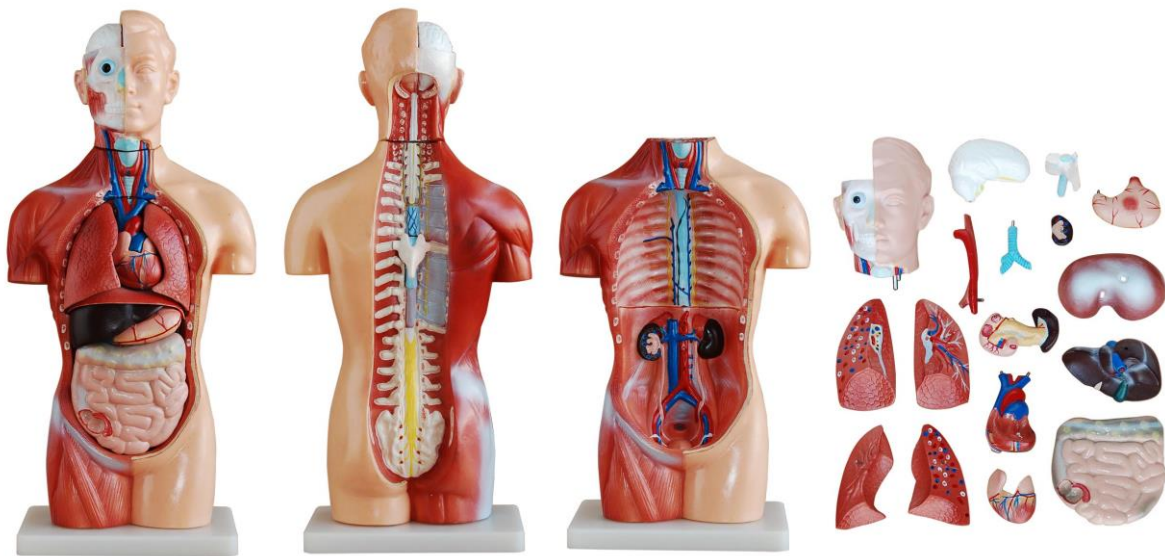


Mini torso, sexless, 18 parts, 42 cm
MOD-MINITORSO



USES:

The model is designed as a visual aid for teaching anatomy and physiology courses. It helps students understand the anatomical structure of the head, neck and internal organs of the human body.

This model is specifically designed for use by students as it is easy to disassemble and reassemble and shows all relevant organs.

DEMONSTRATIONS:

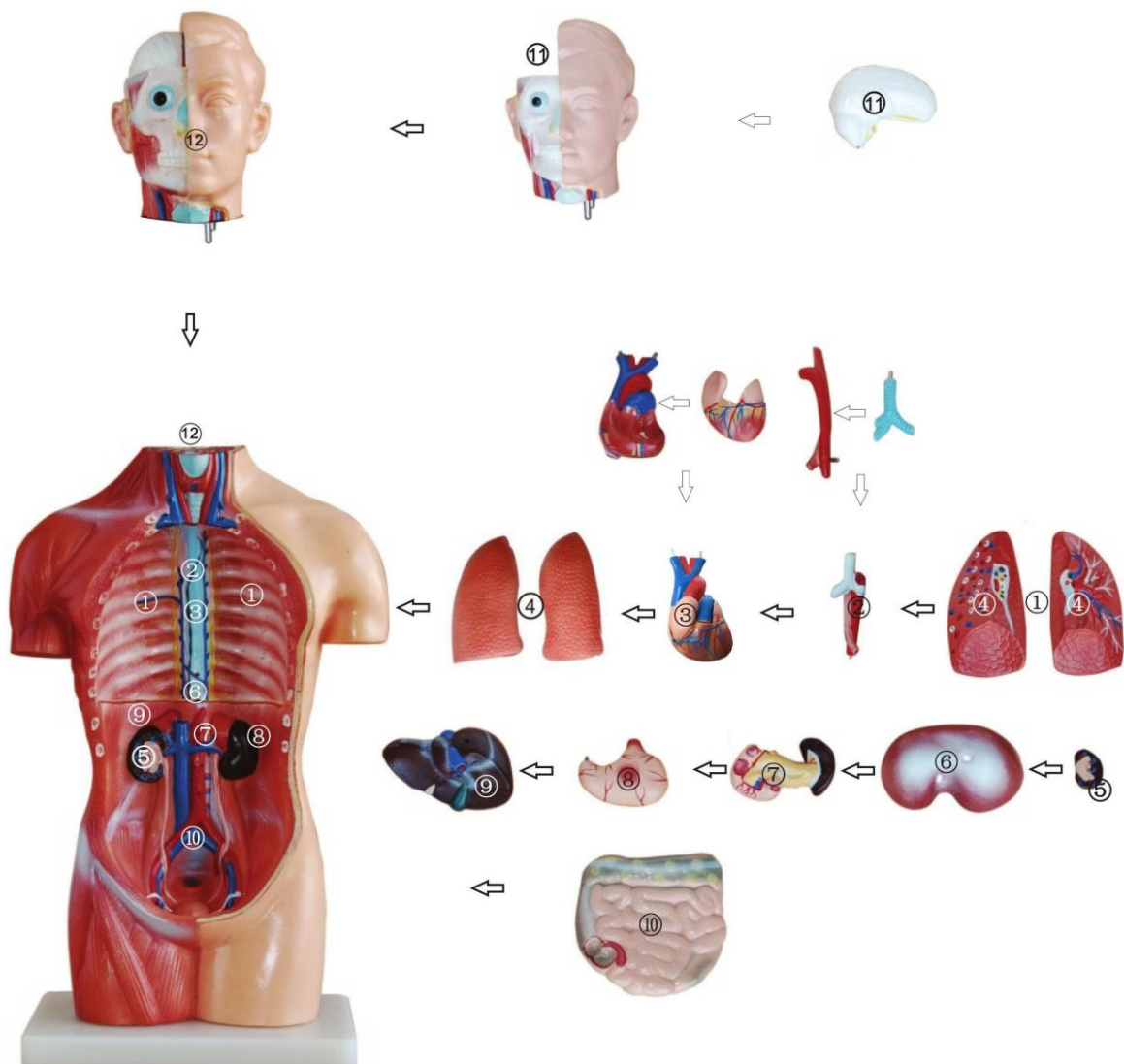
This model including 18 dissectible parts: torso, head, brain, trachea, esophagus and descending aorta, diaphragm, lung (4 parts), heart (2 parts), stomach, liver, kidney, pancreas and spleen, intestine, vertebra and spinal nerves. It shows the relative positions, morphological characters and anatomical structures of the head, neck and internal organs with special reference to respiratory, digestive, and nervous systems.

CONSTRUCTION: The model is made of PVC plastic. Mounted on base

SIZE: 42 cm tall

HOW TO REASSEMBLE THE DISASSEMBLED TORSO MODEL:

Front:



Back:

