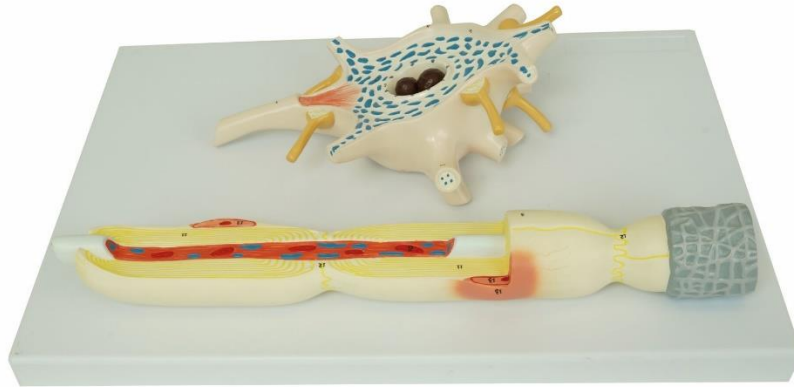


Nerve cell (neuron), model MOD-NEURON



USE: This model of a nerve cell is designed as a visual aid for teaching biology in schools. It helps students understand the morphology, structure and function of a nerve cell.

CONSTRUCTION: The model consists of two parts on a base plate: the cell body and the axon. On them, 13 morphological elements can be identified and are numbered for easier identification:

LEGEND:

1. Cell body (soma)
2. Dendrite
3. Axon (neurite) with axon hillock at the transition from the cell body to the axon.
4. Cell membrane
5. Nuclear membrane
6. Nucleolus
7. Nucleus pore
8. Mitochondrion
9. Nissl body
10. Synapse (axosomatic)
11. Myelin sheath
12. Ranvier node
13. Schwann cell

MATERIAL: Made of PVC

SIZE OF THE MODEL:

Base plate: 40 x 26 cm

Axon length: 35 cm